

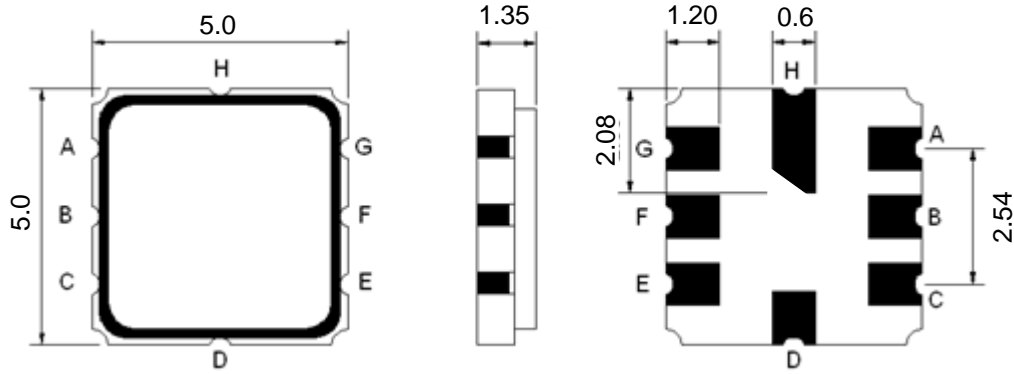
- Low-Loss RF SAW Filter for Remote Control
- Revision0: Aug 2015

## Electrical Characteristics

MAXIMUM RATING				
PARAMETERS DESCRIPTION	UNIT	MINIMUM	TYPICAL	MAXIMUM
Operating Temperature Range	°C	-40	-	+90
Storage Temperature Range	°C	-40	-	+90
Maximum DC Voltage	V	-	-	0
Maximum Input Power	dBm	-	-	0
Length x Width	mm <sup>2</sup>	-	5.0 x 5.0	-
Height	mm	-	-	1.35

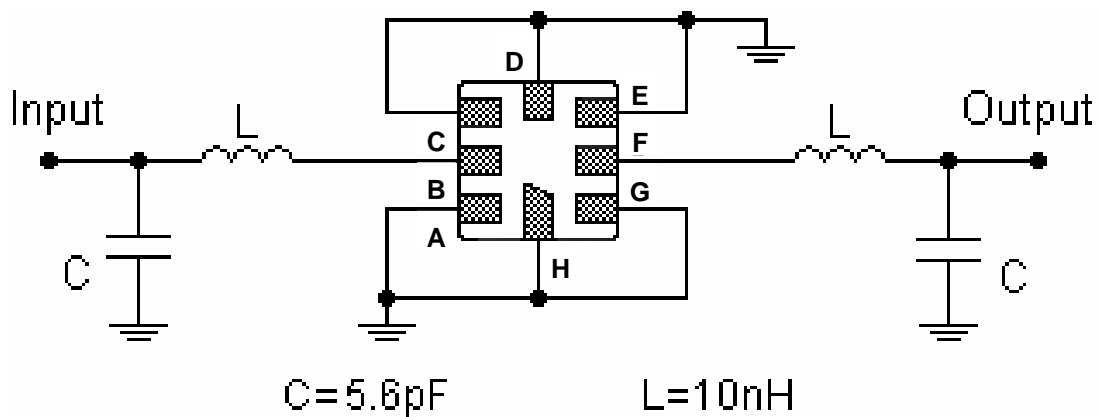
ELECTRICAL SPECIFICATION				
PARAMETERS DESCRIPTION	UNIT	MINIMUM	TYPICAL	MAXIMUM
Center Frequency (Fo)	MHz	-	868.69	-
Insertion Loss within 868.39 ~ 868.99 MHz	dB	-	3.8	5.0
3dB Pass Bandwidth	MHz	-	1.9	-
Relative Attenuation:				
10 ~ 700 MHz	dB	50	55	-
700 ~ 830 MHz	dB	33	38	-
830 ~ 863 MHz	dB	23	28	-
873 ~ 880 MHz	dB	15	20	-
880 ~ 1000 MHz	dB	30	35	-

## Package Dimensions



Pin Description	
B	In
F	Out
A, C, E, G	To be Grounded
D, H	Case Ground

## Testing Environment



**Frequency Characteristics**

**Frequency Response**

